

CR 210 at CR 2209 (St. Johns Parkway) Intersection Access Management Improvements

HYBRID PUBLIC MEETING

St Johns County, Florida | Financial Management No. 441371-1

VIRTUAL PUBLIC MEETING

April 7, 2026

Open House: 5:30 p.m. to 6:00 p.m.
Presentation & Public Comment Period: 6:00 p.m.

IN-PERSON PUBLIC MEETING

April 9, 2026

Open House: 4:30 p.m. to 6:00 p.m.
Presentation & Public Comment Period: 6:00 p.m.
Shearwater, Kayak Clubroom
100 Kayak Way
St. Augustine, Florida 32092





Valerie Pacetti, Project Manager

Public Works-Engineering Division, St. Johns County
2750 Industry Center Road
St. Augustine, Florida 32084



(904) 209-0171

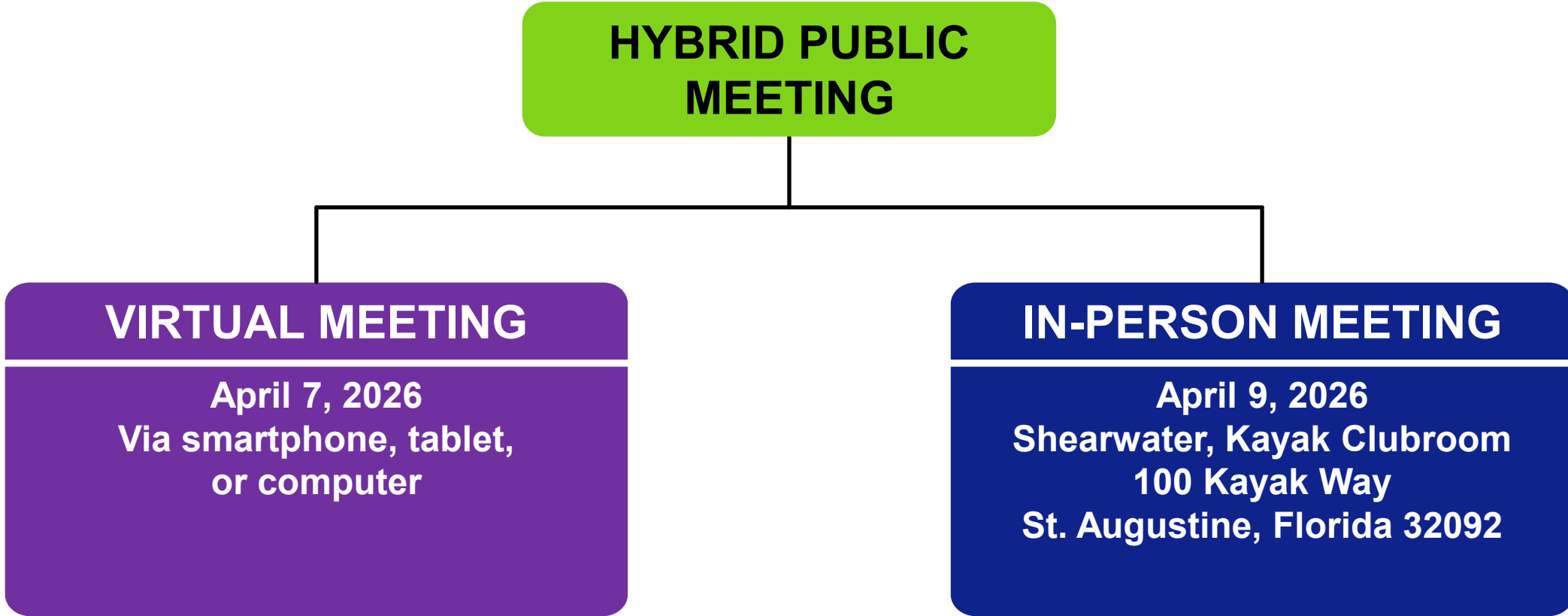


vpacetti@sjcfl.us



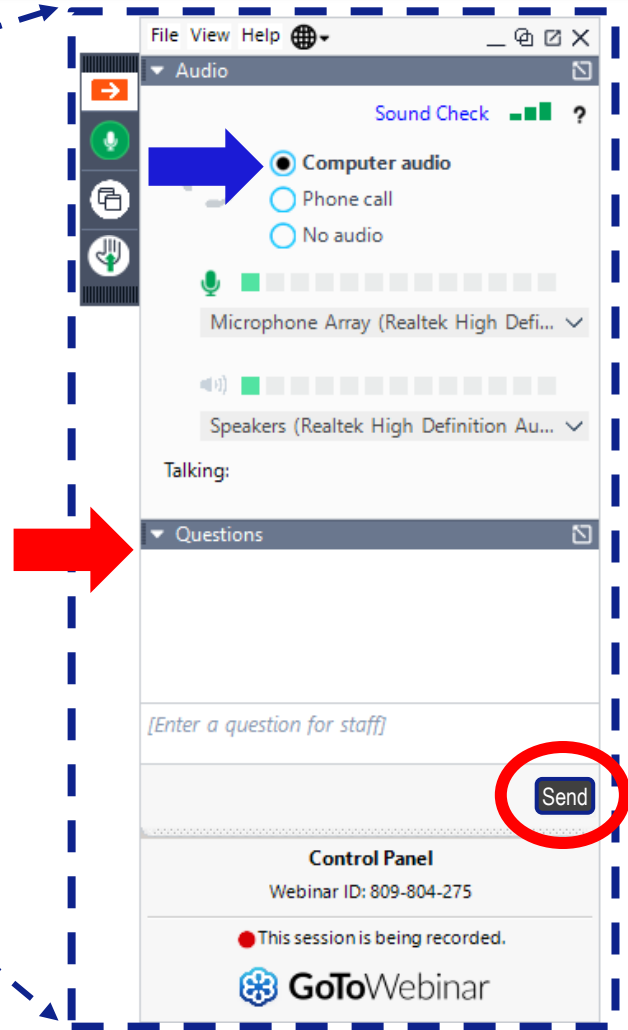
www.nflroads.com/CR210

This Public Meeting is being conducted in a hybrid format



GoToWebinar Control Panel

CR 210 at CR 2209 (St. Johns Parkway) | St. Johns County, Florida | FPID 441371-1



Technical Information

CR 210 at CR 2209 (St. Johns Parkway) | St. Johns County, Florida | FPID 441371-1



All attendees will be placed in 'Listen Only' mode throughout the Meeting



Type your comments or questions in the Questions Pane on the control panel



Responses to comments and questions will be provided

Purpose of Public Meeting

CR 210 at CR 2209 (St. Johns Parkway) | St. Johns County, Florida | FPID 441371-1



Share information



Review proposed improvements



Receive public input



Public Meeting Components

CR 210 at CR 2209 (St. Johns Parkway) | St. Johns County, Florida | FPID 441371-1



Open House



Presentation



Public Comment Period



Public Notifications

CR 210 at CR 2209 (St. Johns Parkway) | St. Johns County, Florida | FPID 441371-1



Newspaper



Government
Officials



Social Media



Florida
Administrative
Register



Property
Owners



FDOT
Websites

Civil Rights Act of 1964

CR 210 at CR 2209 (St. Johns Parkway) | St. Johns County, Florida | FPID 441371-1

Public participation is solicited without regard to race, color, national origin, age, sex, religion, disability, or family status.

Title VI – Nondiscrimination

Persons may file a formal complaint(s) by writing to:

Dorothy Neal

District 2 Title VI Coordinator

Florida Department of Transportation

District 2

1109 S. Marion Avenue, MS 2006

Lake City, Florida 32025-5874

Dorothy.Neal@dot.state.fl.us

(386) 961-7616

Lisa Bethancourt

State Title VI Coordinator

Florida Department of Transportation

Equal Opportunity Office

605 Suwannee Street, MS 65

Tallahassee, Florida 32399-0450

Lisa.Bethancourt@dot.state.fl.us

(850) 414-4742

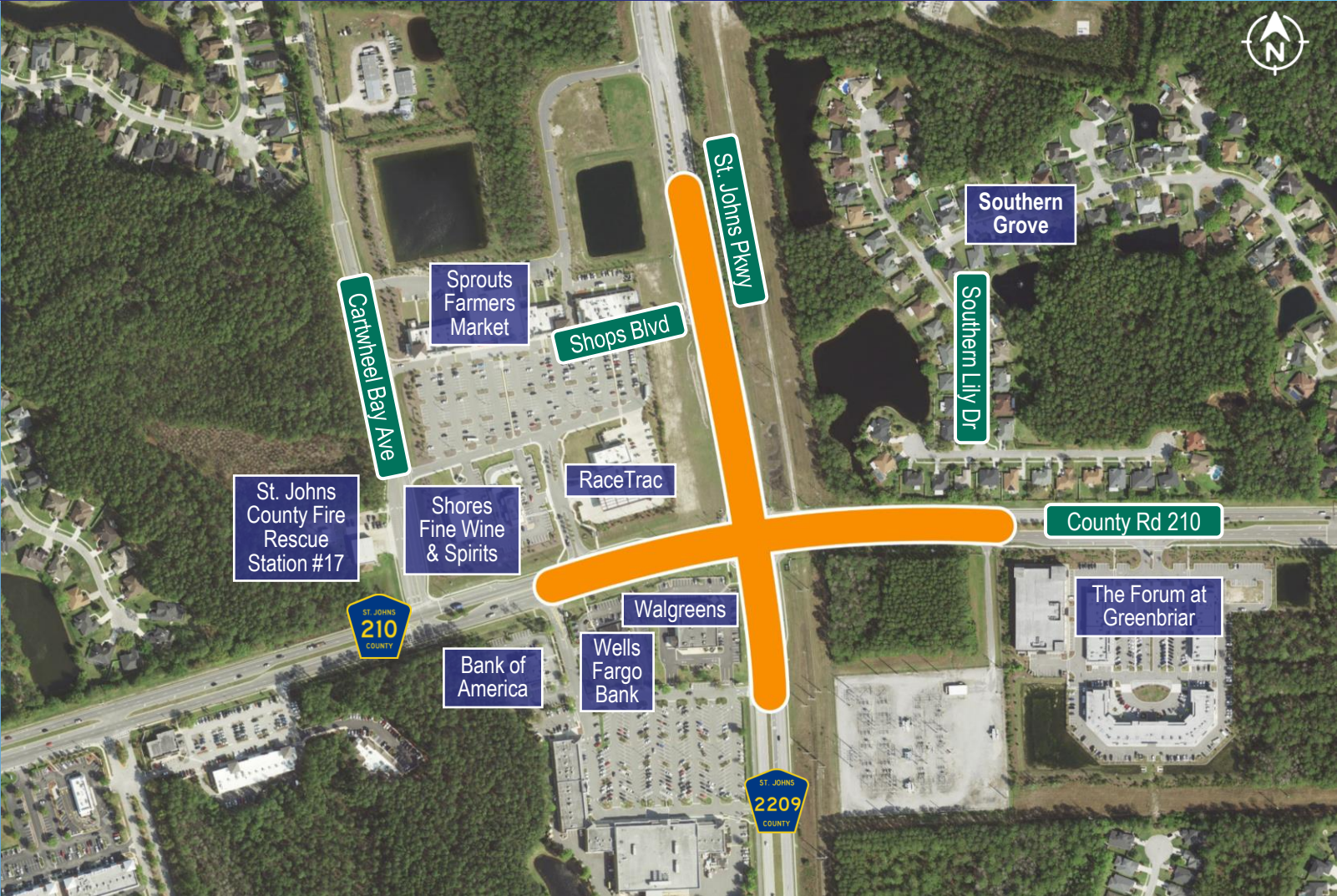
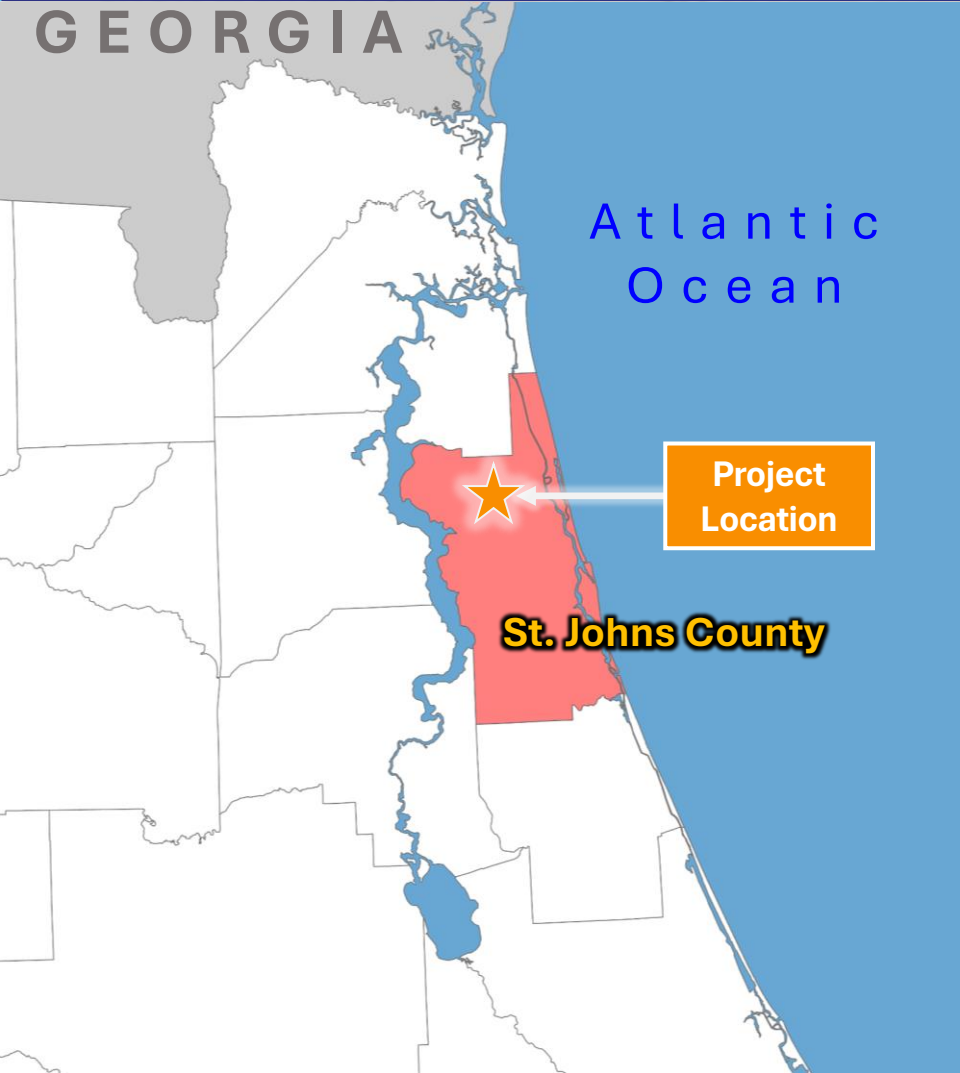
Project Location Map

CR 210 at CR 2209 (St. Johns Parkway) | St. Johns County, Florida | FPID 441371-1



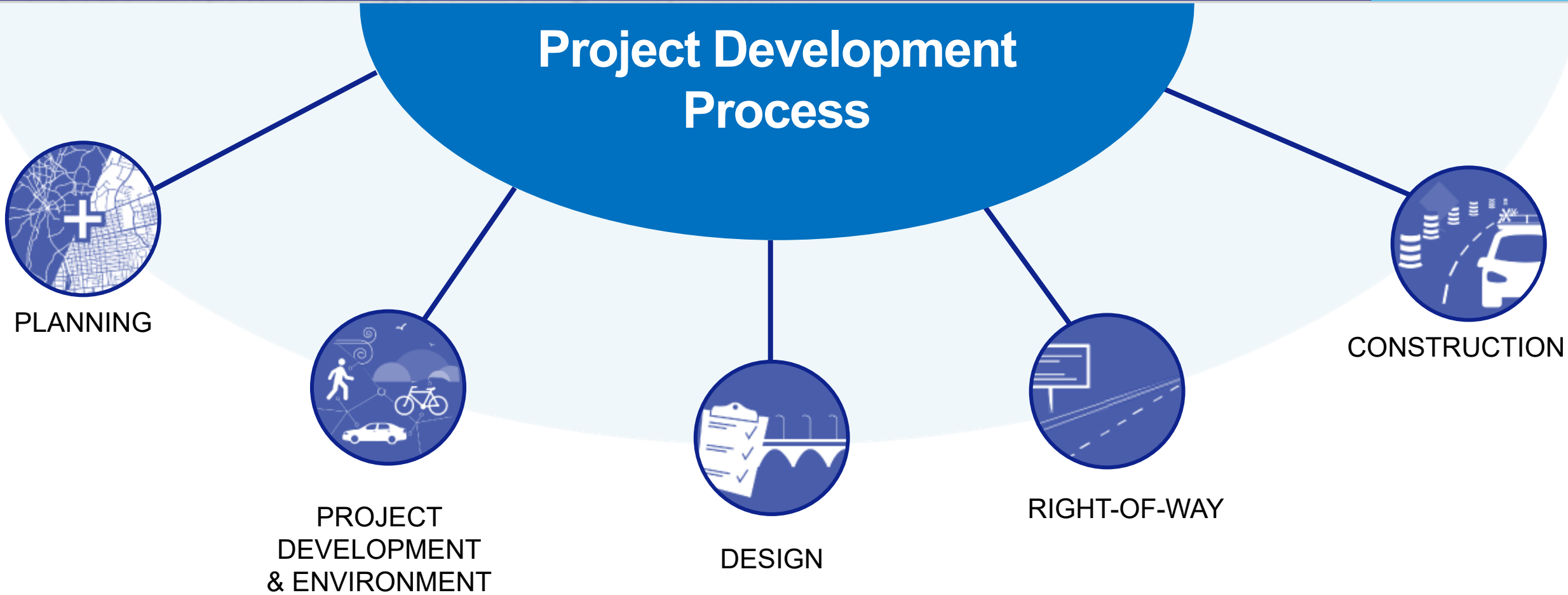
Project Location Map

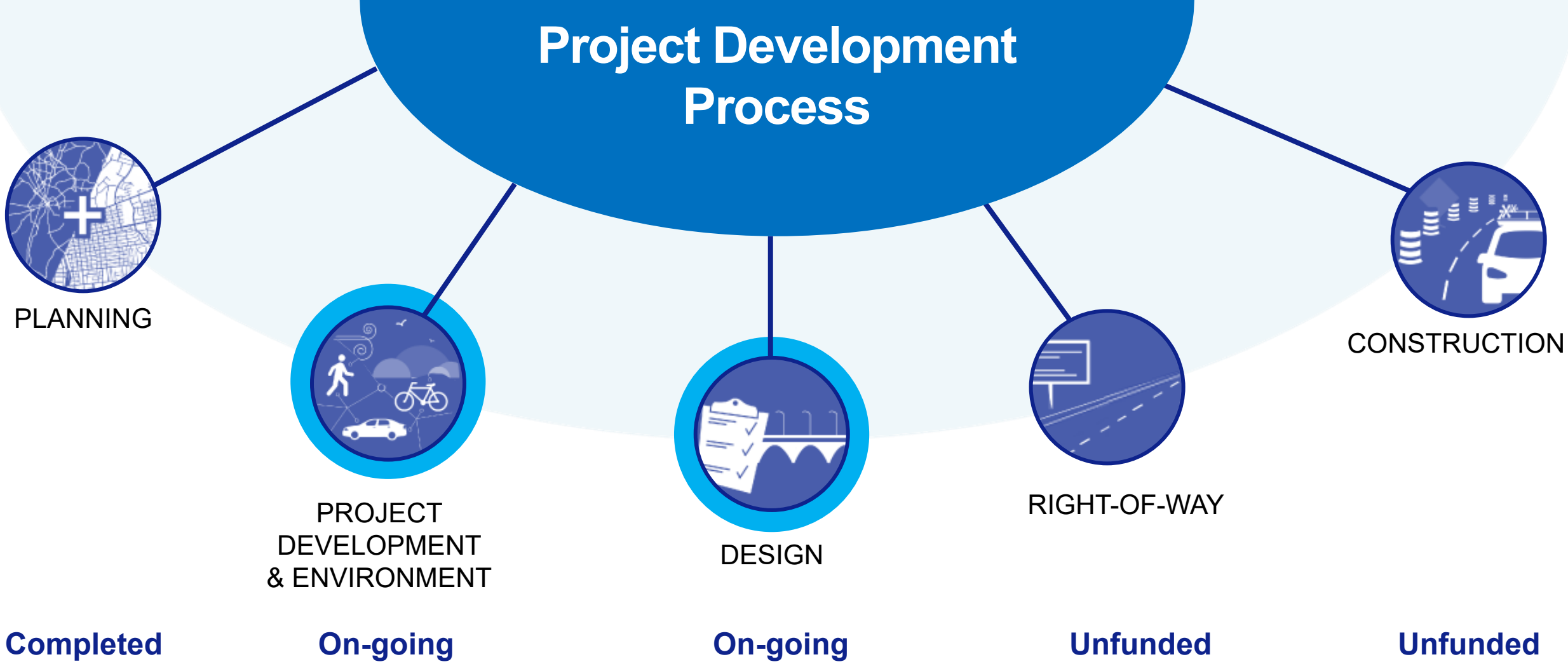
CR 210 at CR 2209 (St. Johns Parkway) | St. Johns County, Florida | FPID 441371-1



Project Development Process

CR 210 at CR 2209 (St. Johns Parkway) | St. Johns County, Florida | FPID 441371-1





Project Purpose

CR 210 at CR 2209 (St. Johns Parkway) | St. Johns County, Florida | FPID 441371-1

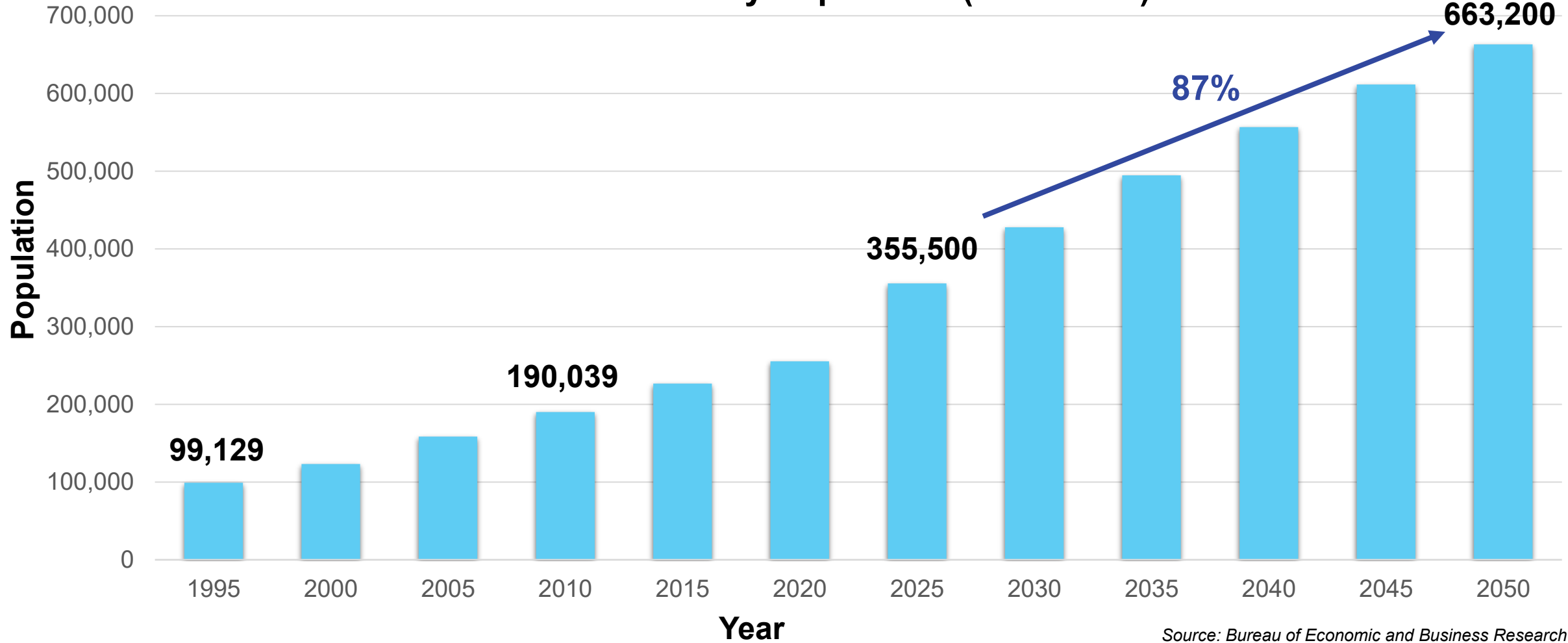
- Relieve existing and future congestion
- Enhance safety



Project Need

CR 210 at CR 2209 (St. Johns Parkway) | St. Johns County, Florida | FPID 441371-1

St. Johns County Population (1995-2050)



Source: Bureau of Economic and Business Research (BEBR)

What is Level of Service (LOS)?

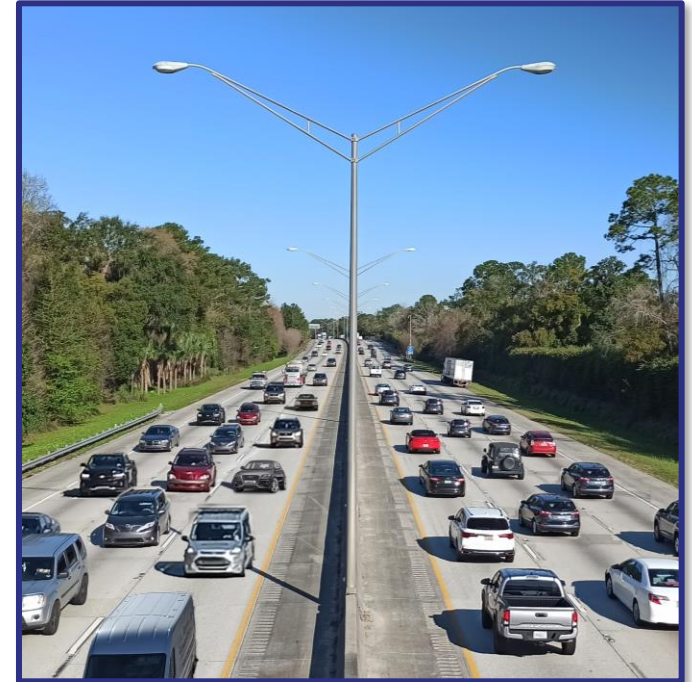
CR 210 at CR 2209 (St. Johns Parkway) | St. Johns County, Florida | FPID 441371-1



LOS A-B



LOS C-D



LOS E-F

Project Need

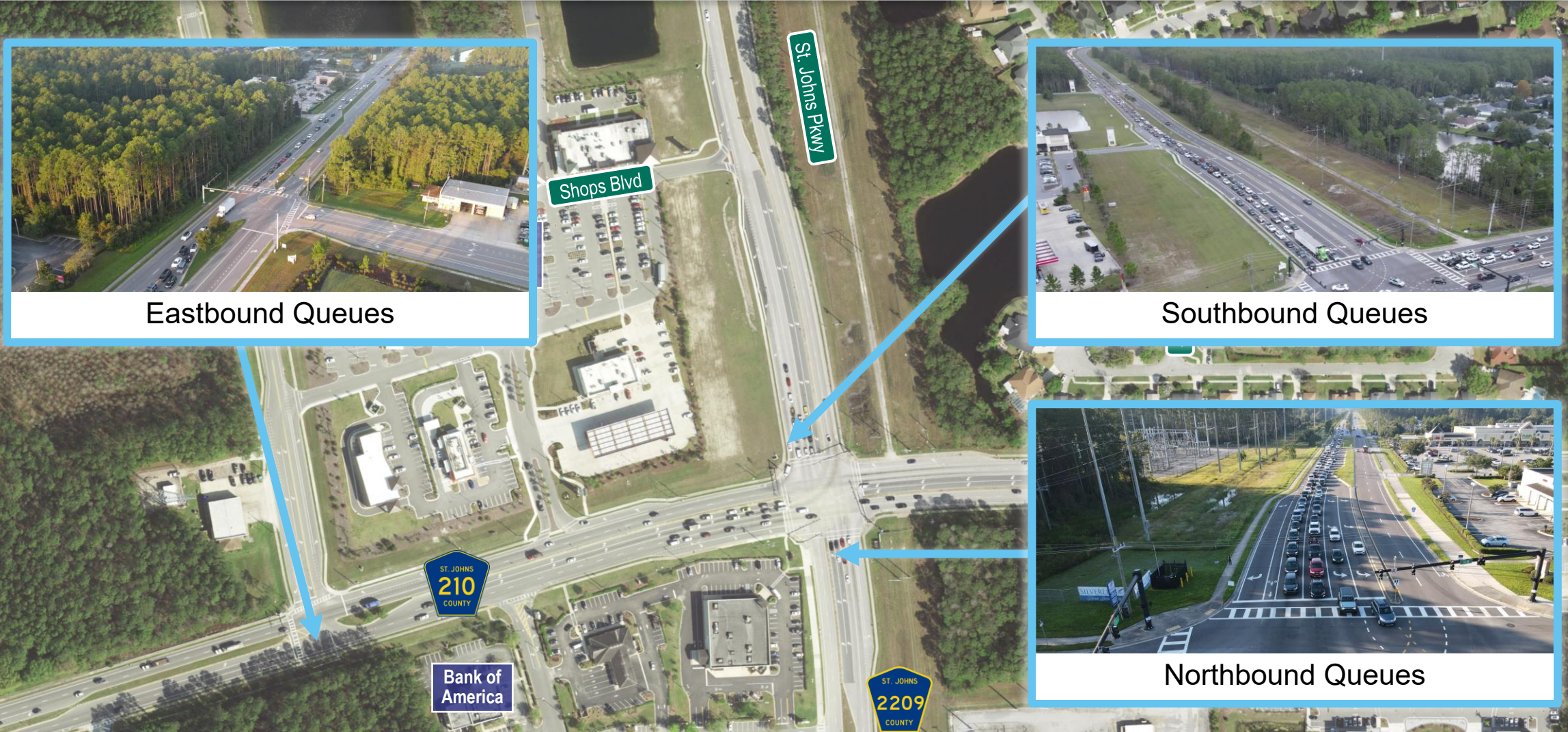
CR 210 at CR 2209 (St. Johns Parkway) | St. Johns County, Florida | FPID 441371-1

Level of Service: F



Project Need

CR 210 at CR 2209 (St. Johns Parkway) | St. Johns County, Florida | FPID 441371-1



Eastbound Queues



Southbound Queues



Northbound Queues



Project Need

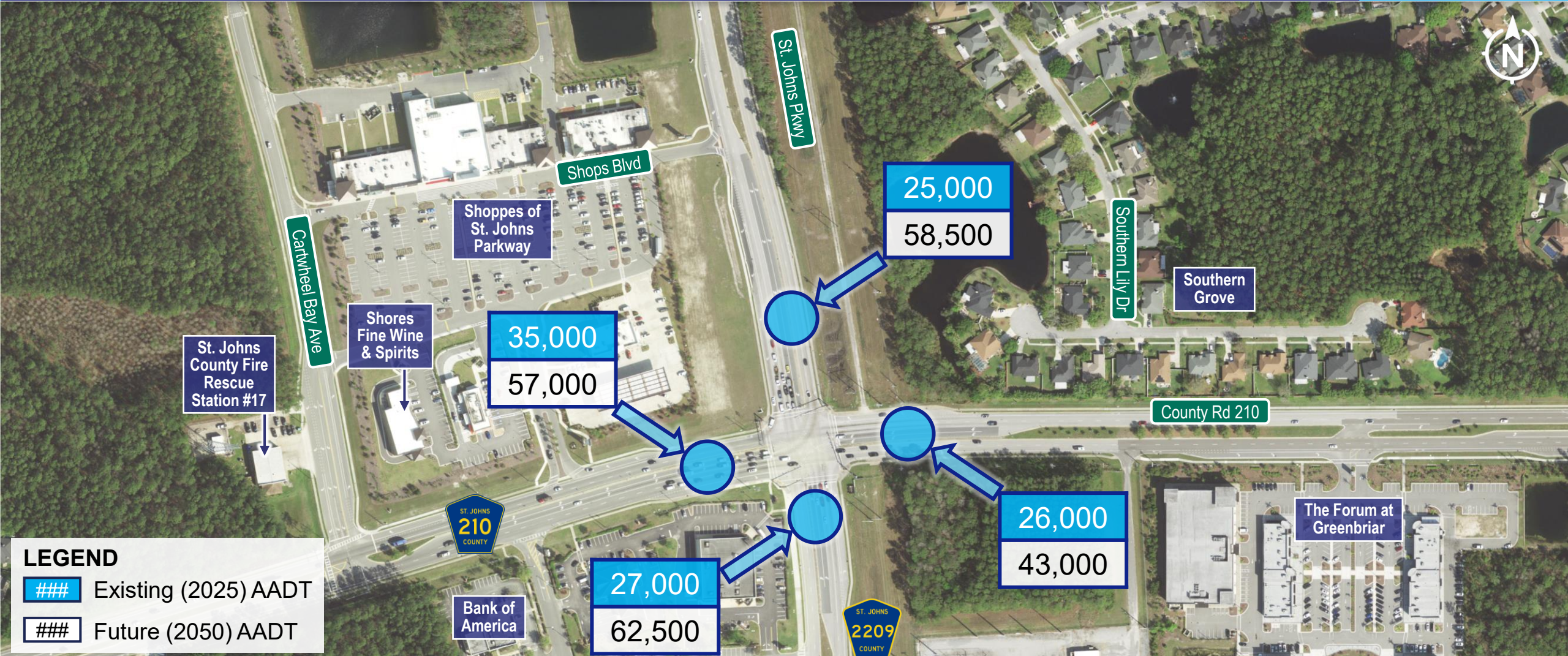
CR 210 at CR 2209 (St. Johns Parkway) | St. Johns County, Florida | FPID 441371-1

Southbound Queues During Evening Rush Hour



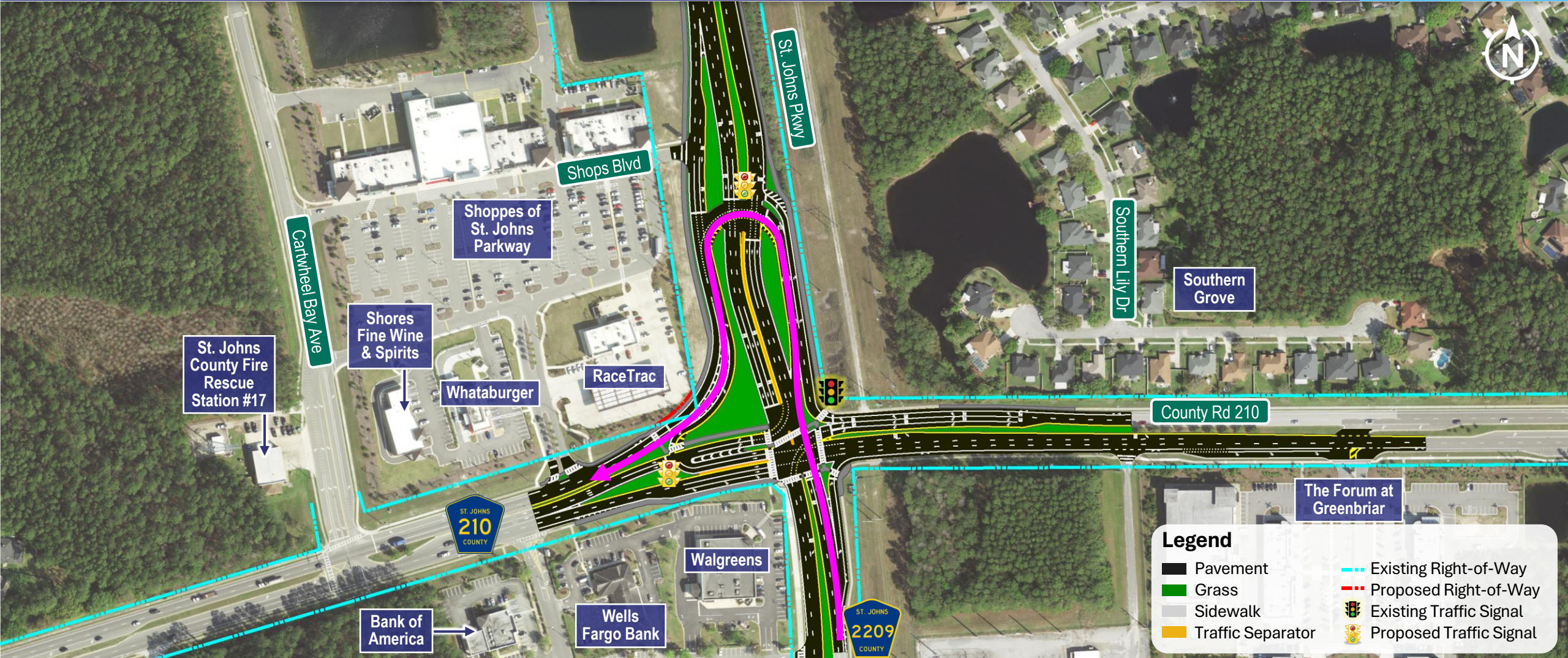
Existing and Future Traffic Volumes

CR 210 at CR 2209 (St. Johns Parkway) | St. Johns County, Florida | FPID 441371-1



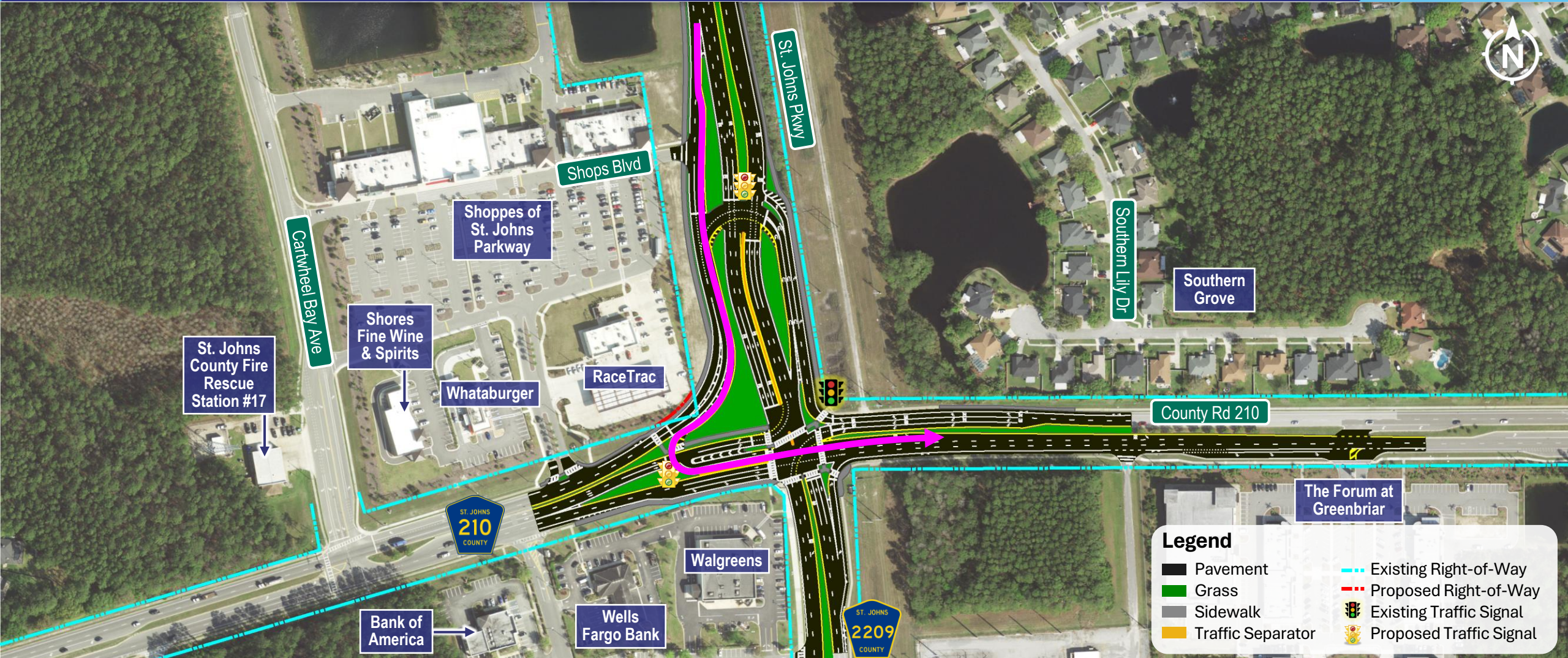
Northbound Improvements

CR 210 at CR 2209 (St. Johns Parkway) | St. Johns County, Florida | FPID 441371-1



Southbound Improvements

CR 210 at CR 2209 (St. Johns Parkway) | St. Johns County, Florida | FPID 441371-1

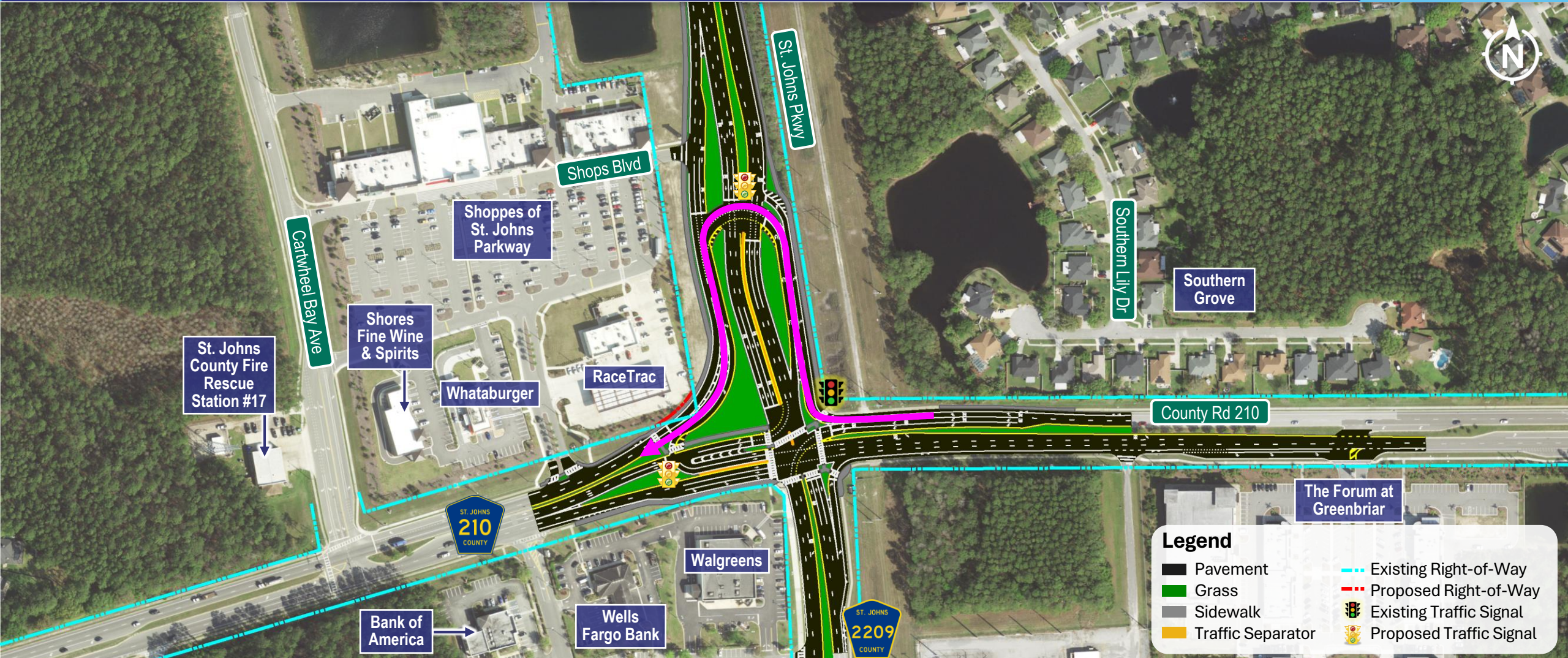


Legend

Pavement	Existing Right-of-Way
Grass	Proposed Right-of-Way
Sidewalk	Existing Traffic Signal
Traffic Separator	Proposed Traffic Signal

Westbound Improvements

CR 210 at CR 2209 (St. Johns Parkway) | St. Johns County, Florida | FPID 441371-1



Project Benefits

CR 210 at CR 2209 (St. Johns Parkway) | St. Johns County, Florida | FPID 441371-1

Intersection Performance in 2050

Intersection Delay
AM Peak Hour

No-Build



Delay

85% reduction
in travel delay

Build



Delay

PM Peak Hour

No-Build



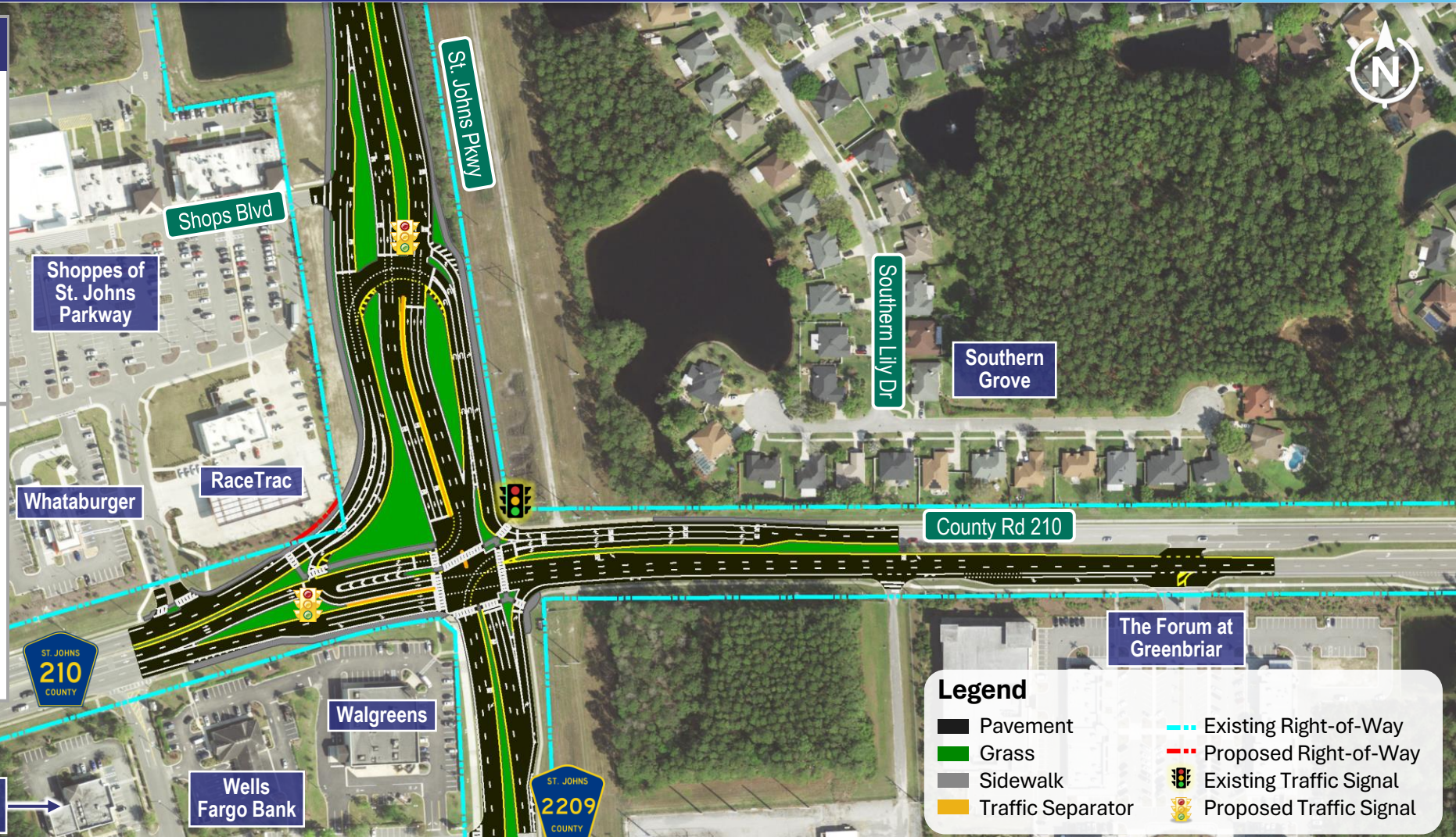
Delay

83% reduction
in travel delay

Build



Delay



Legend

- Pavement
- Grass
- Sidewalk
- Traffic Separator
- Existing Right-of-Way
- Proposed Right-of-Way
- Existing Traffic Signal
- Proposed Traffic Signal

Project Benefits

CR 210 at CR 2209 (St. Johns Parkway) | St. Johns County, Florida | FPID 441371-1

Intersection Performance in 2050

Queues

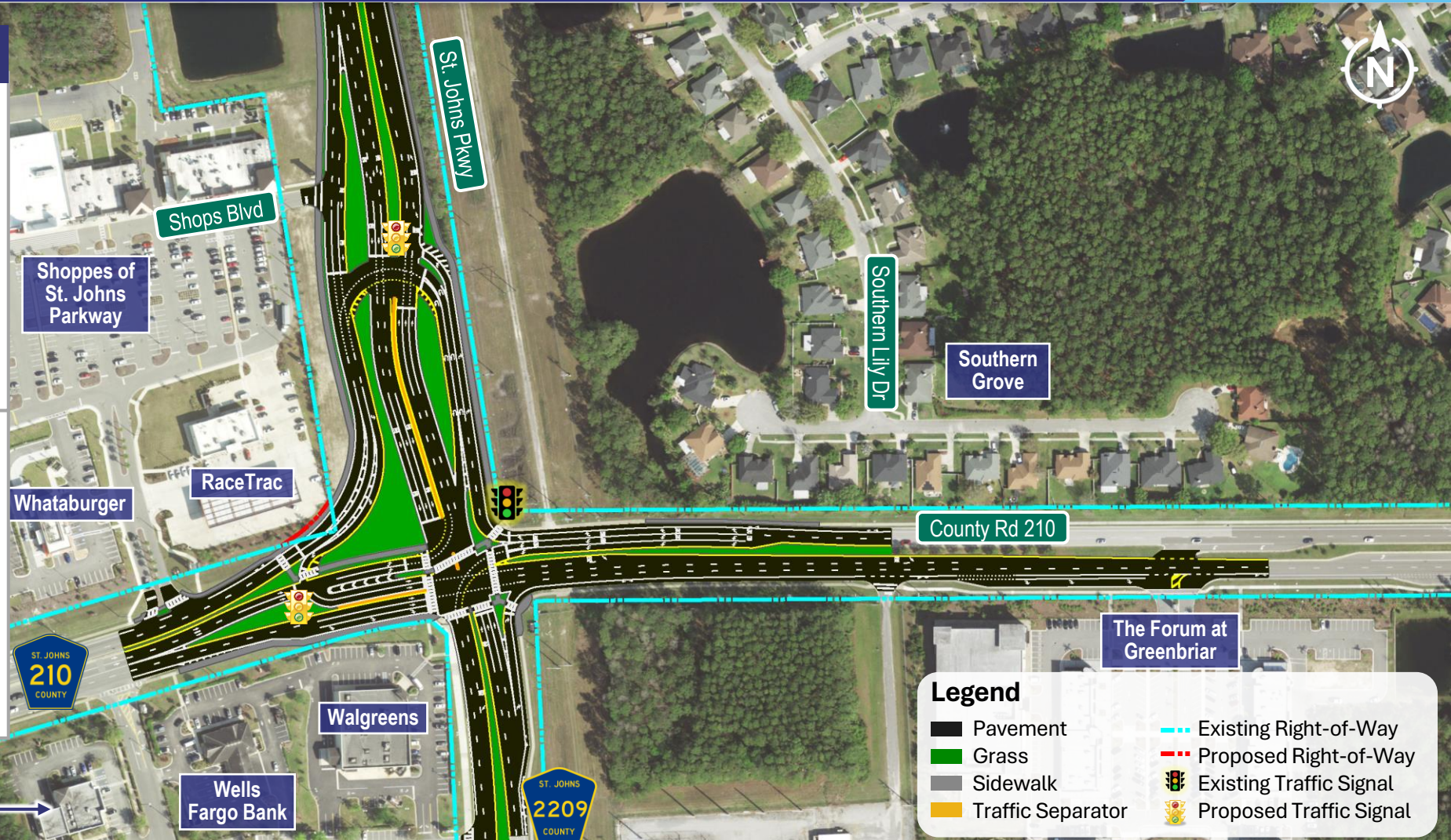


Northbound, southbound, and eastbound queues during rush hour reduced by **90%**

Crashes



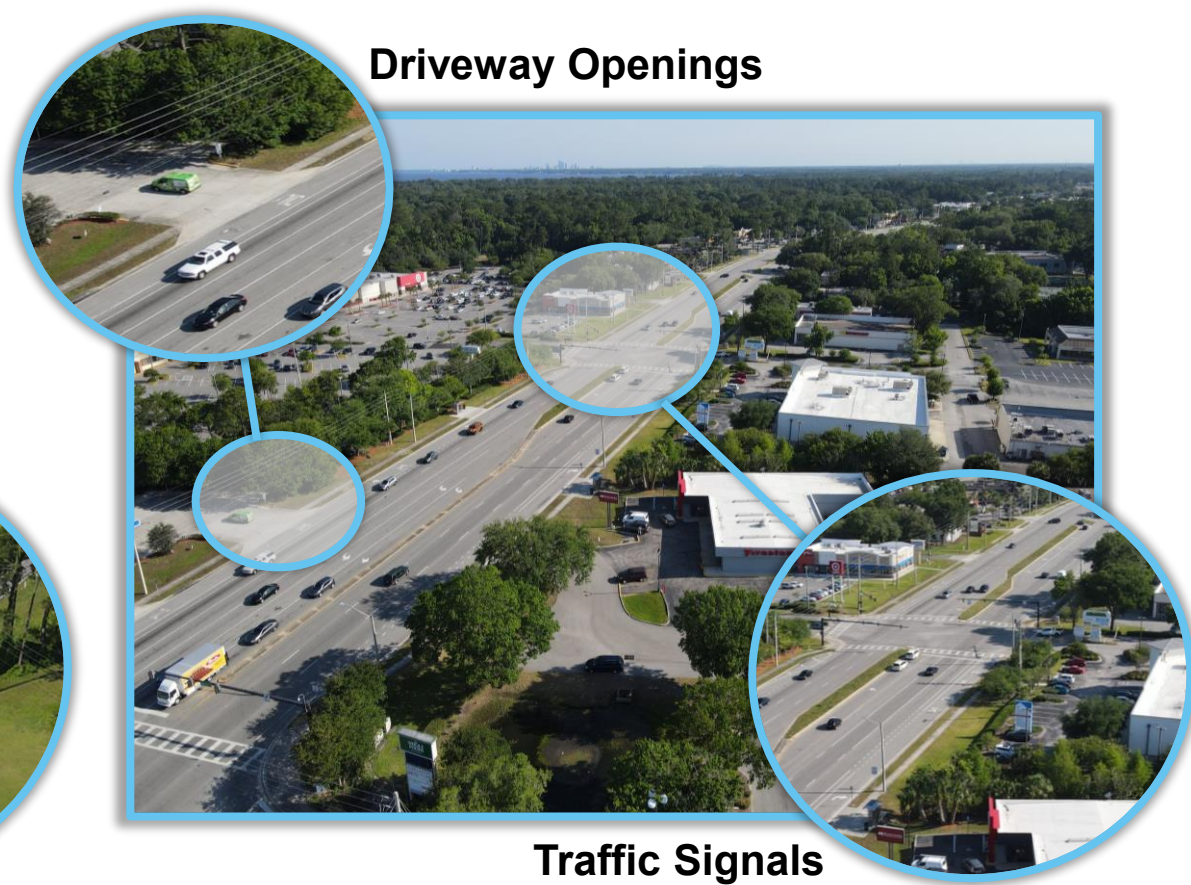
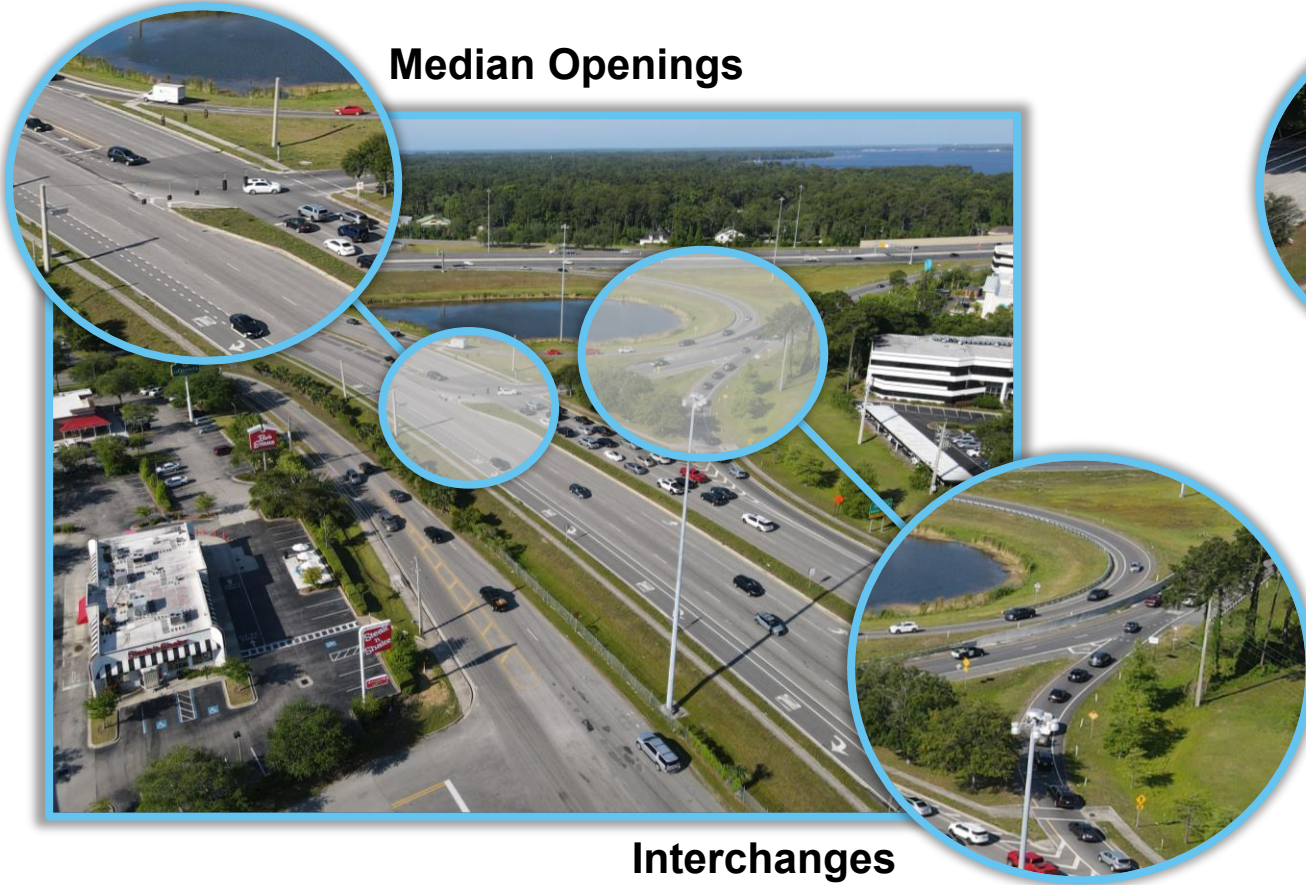
Approximately **54%** reduction in crashes



What is Access Management?

CR 210 at CR 2209 (St. Johns Parkway) | St. Johns County, Florida | FPID 441371-1

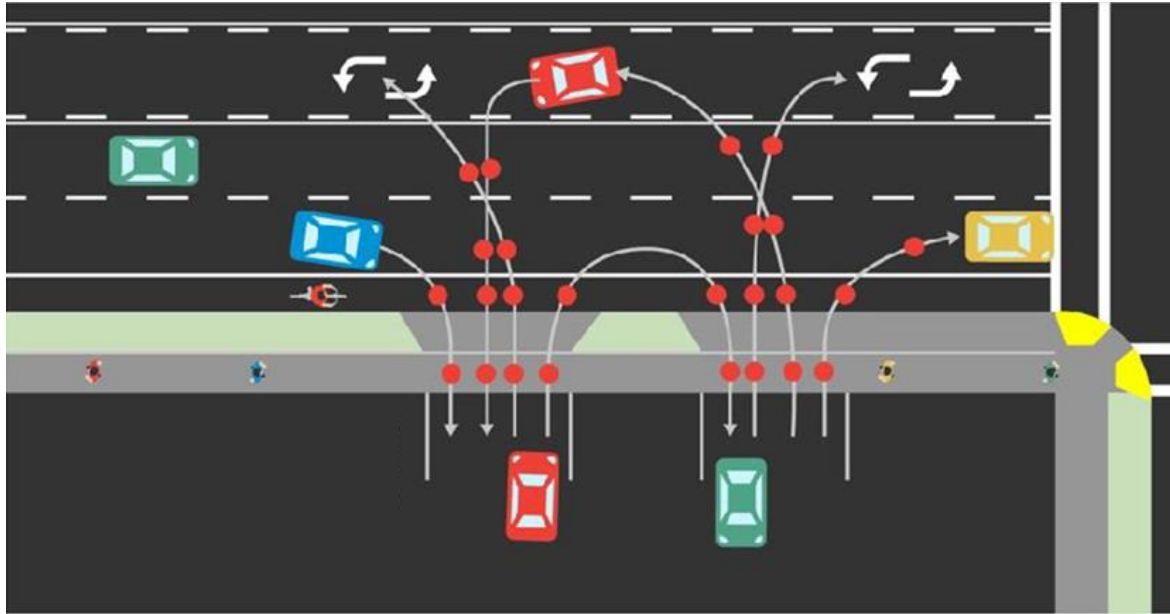
Access management is the careful planning of the location, type, and design of access to properties, businesses, and homes.



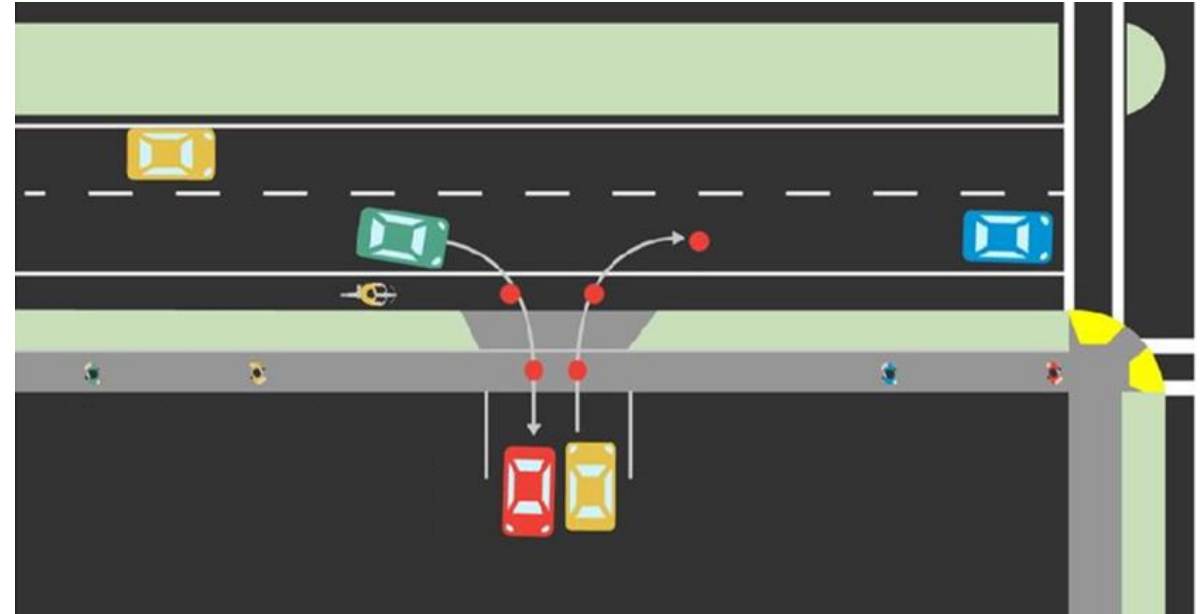
How Does Access Management Improve Safety?

CR 210 at CR 2209 (St. Johns Parkway) | St. Johns County, Florida | FPID 441371-1

More Conflicts



Less Conflicts



LEGEND

● Conflict Points

Access Management Contact Information

CR 210 at CR 2209 (St. Johns Parkway) | St. Johns County, Florida | FPID 441371-1



Duane Kent, P.E.

St. Johns County Engineer
2750 Industry Center Road
St. Augustine, Florida 32084

Phone: (904) 209-0266

Email: rkent@sjcfl.us

Right-of-Way

CR 210 at CR 2209 (St. Johns Parkway) | St. Johns County, Florida | FPID 441371-1



- Right-of-Way: 0.045 acres from one parcel
- No relocation of families and businesses

Environmental Impacts

CR 210 at CR 2209 (St. Johns Parkway) | St. Johns County, Florida | FPID 441371-1

No significant impacts to:

- Air Quality
- Archaeological & Historical Sites
- Contamination Sites
- Floodplains
- Noise
- Threatened or Endangered Species
- Water Quality
- Wetlands



Permits

CR 210 at CR 2209 (St. Johns Parkway) | St. Johns County, Florida | FPID 441371-1

All applications for required permits will be made at the appropriate time

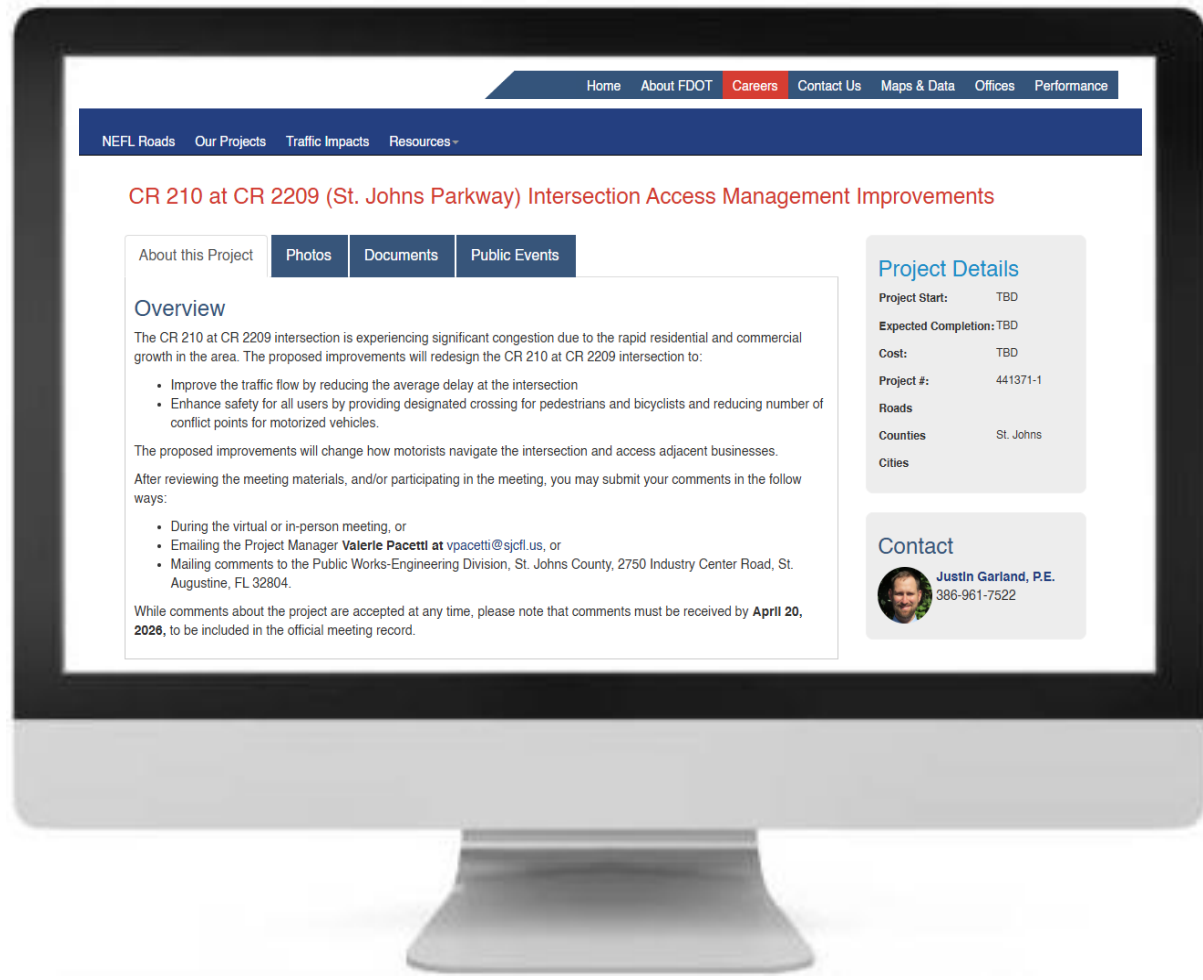


Project Schedule and Cost

CR 210 at CR 2209 (St. Johns Parkway) | St. Johns County, Florida | FPID 441371-1

Phase	Status
Project Development & Environment (PD&E)	Ongoing
Design	Ongoing
Right-of-Way Acquisition	2027 - 2028
Construction and Construction Engineering & Inspection (CEI)	2027 - 2029
Estimated total Construction and CEI cost is \$19.5 million	

Schedule and cost are preliminary and subject to change



For more information regarding this project, please visit the project website at www.nflroads.com/CR210

We Welcome Your Comments

CR 210 at CR 2209 (St. Johns Parkway) | St. Johns County, Florida | FPID 441371-1





Valerie Pacetti, Project Manager

Public Works-Engineering Division, St. Johns County
2750 Industry Center Road
St. Augustine, Florida 32084



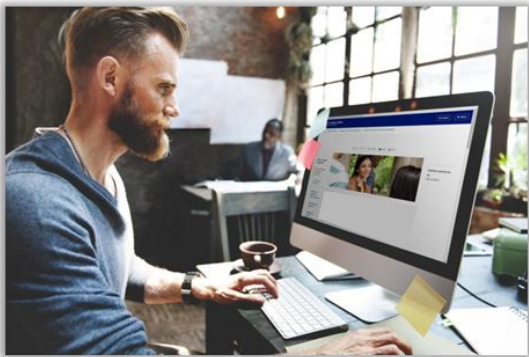
(904) 209-0171

vpacetti@sjcfl.us

www.nflroads.com/CR210

Postmarked Comments

CR 210 at CR 2209 (St. Johns Parkway) | St. Johns County, Florida | FPID 441371-1



Please submit
comments by
April 20, 2026

FDOT Compass

CR 210 at CR 2209 (St. Johns Parkway) | St. Johns County, Florida | FPID 441371-1

FDOT

SAFETY

COMMUNITIES

RESILIENCY

ROBUST SUPPLY CHAIN

TECHNOLOGY

WORKFORCE DEVELOPMENT

SAFETY

COMMUNITIES

RESILIENCY

ROBUST SUPPLY CHAIN

TECHNOLOGY

WORKFORCE DEVELOPMENT

Target Zero

CR 210 at CR 2209 (St. Johns Parkway) | St. Johns County, Florida | FPID 441371-1

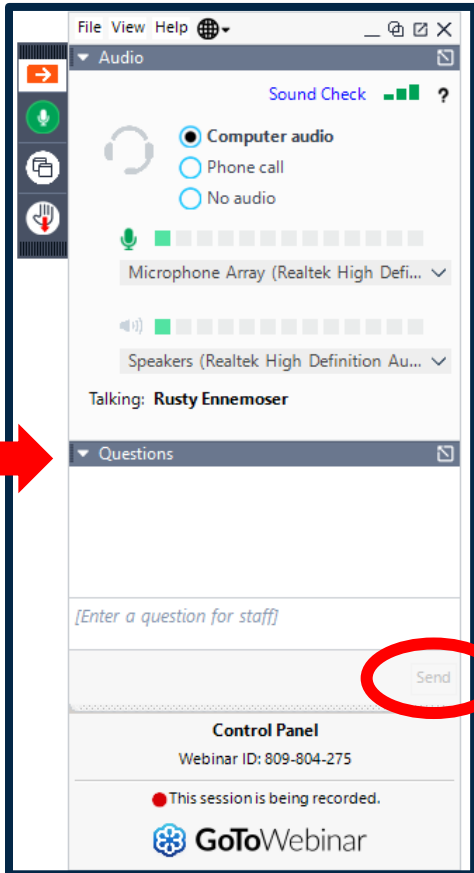


Thank You



Submitting Comments & Questions

CR 210 at CR 2209 (St. Johns Parkway) | St. Johns County, Florida | FPID 441371-1



Control Panel



Project Website



Email

Public Comment Period

CR 210 at CR 2209 (St. Johns Parkway) | St. Johns County, Florida | FPID 441371-1

Virtual / Online Participants

- Oral Comments:
 - Click Raise Hand button on the Control Panel
 - Unmute your microphone when your name is called

*See GoToWebinar
Control Panel*



Public Comment Period

